

**NIRI – FAIRFIELD/WESTCHESTER CHAPTER**  
**Membership Profile – May 2006**  
*108 Members*



**officers**

**President**  
 Steven Eschbach, CFA  
 FuelCell Energy, Inc.

**Treasurer**  
 Daniel Saks  
 Taro Pharmaceuticals  
 U.S.A., Inc.

**Secretary**  
 Victoria Garcia  
 Crane Co.

**Co-VPs Communications**  
 Judy McLevey  
 New York Stock Exchange  
 John Simboli  
 The Wyant Simboli Group

**VP Education**  
 June Filingeri  
 Comm-Partners LLC

**VP External Affairs**  
 Brian Turcotte  
 International Paper

**VP Membership**  
 Peter Spalding  
 Curran & Connors  
 Info@nirifairwest.org

**Co-VPs, Programs**  
 Pamela Styles  
 Independent Consultant

Margaret Lupton  
 Ethan Allen Interiors

**VP Technology**  
 Frank Golden  
 The Thomson Corporation

**directors**

**Ralph Allen**  
 Beacon Advisors

**Mary Ann Dunnell**  
 Chemtura Corporation

**Hillary Gaizler**  
 Business Wire

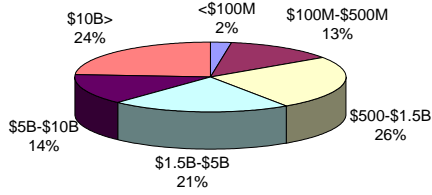
**Richard Koch**  
 Crane Co.

**Philip Penn**  
 The Hartford

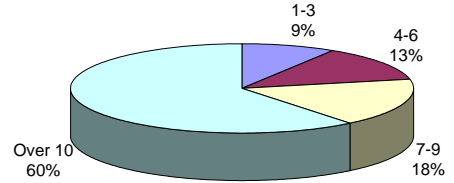
**Judith Pirro**  
 Medco Health Solutions, Inc.  
 judith\_pirro@medco.com

**Charles Wessendorf**  
 United Rentals

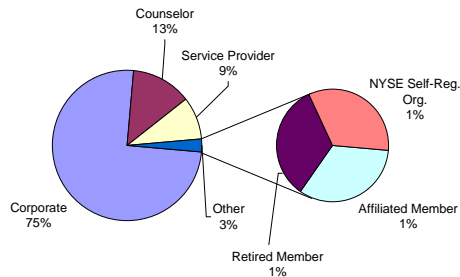
**Cap Size**



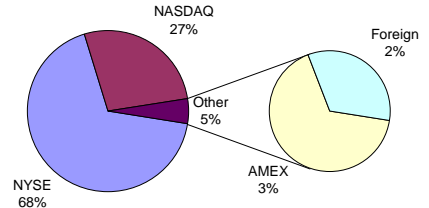
**Years in IR**



**Membership Category**



**Members by Exchange**



**Members by Industry**

